

## HIGH PERFORMANCE • LOW MAINTENANCE • EASY INSTALLATION

CANARM'S "TF" SERIES STAINLESS STEEL CIRCULATING PANEL FANS ARE DESIGNED FOR USE AS AIR TUBE CIRCULATORS, EXHAUST OR CIRCULATING FANS FOR HOG, POULTRY, DAIRY AND GREENHOUSES

Canarm's "TF" Series Stainless Steel Circulating Panel Fans are designed for use in many applications. Four pre-punched mounting holes make the "TF" series fans easy to hang from chains or for permanent installation as a sidewall exhaust fan or intake fan.

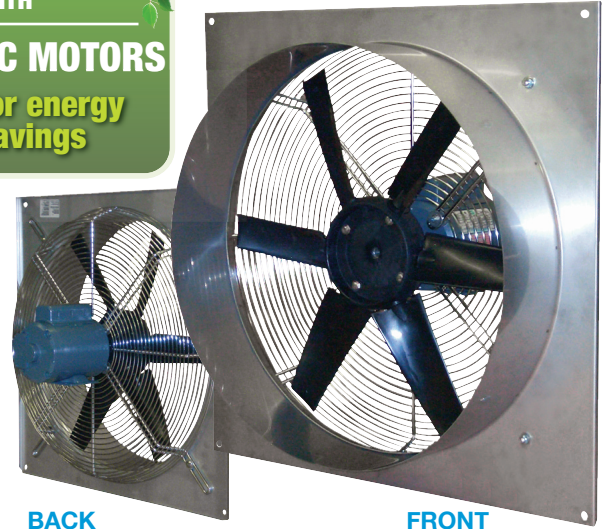
The "TF" series stainless steel fan is ideally suited for use in recirculating ducts or air bags. An extension on the venturi is designed to make Air Bag attachment quick and easy.

## FEATURES

- Available in 12", 16", 24" and 36" sizes.
- Dual voltage, totally enclosed, variable speed (except for 36"), high efficiency ball bearing motors with thermal overload protection.
- Canarm's exclusive "Rotair" air foil polypropylene blade is designed to deliver high volumes of air quietly and efficiently.
- The single speed 36" model has a high performance galvanized blade.
- Stainless steel panel will not rust and has an 4" extension to allow the installation of an air bag.
- All fans are shipped completely assembled.

NOW  
AVAILABLE  
WITH

**EC MOTORS**  
for energy  
savings



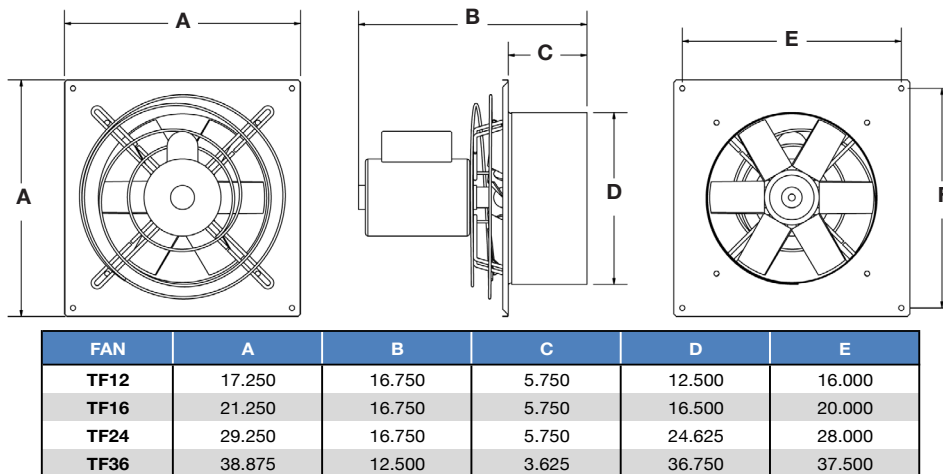
**WARRANTY: 1 YEAR ON FAN.**

## PERFORMANCE DATA & SPECIFICATIONS

MODEL	FAN DIA.	MOTOR H.P.	MOTOR TYPE	FAN RPM	CURRENT LOAD		AIRFLOW CAPACITY - CFM			CFM/ WATT	FRAMING DIMENSIONS	SHIPPING WGT. LBS.
					@115V	@230V	0" SP	.05" SP	.10" SP			
TF12	12"	1/4	High Efficiency Variable Speed Dual Voltage	1750	2.6	1.3	1,380	1,260	1,170	7.5	15 x 15	24
TF16	16"	1/4		1750	3.4	1.7	2,810	2,680	2,540	8.0	19 x 19	27
TF24	24"	1/2		1750	5.0	2.5	5,000	4,700	4,400	9.0	27 x 27	40
TF36	36"	1/2	Single	850	6.0	3.0	11,000	10,500	10,000	20.0	37 x 37	40

\*Call for available EC Motors.

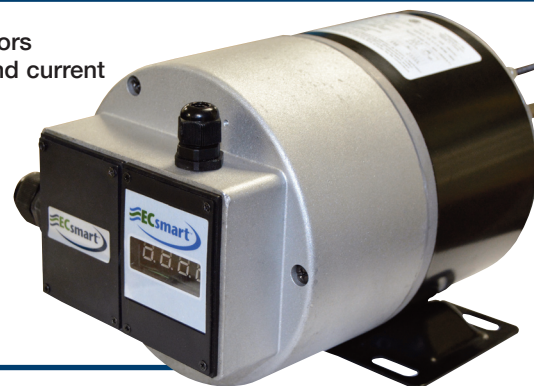
## DIMENSIONS



## THE FIRST AND ONLY MOTOR OF ITS KIND IN THE AGRICULTURAL INDUSTRY

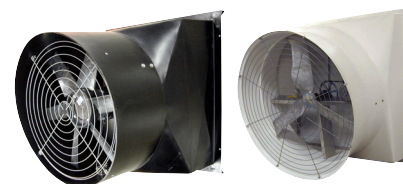
Our ECsmart Motor is an Electronically Commutated Motor. EC motors are electric motors that have permanent magnets on the rotor and use electronics to control the voltage and current applied to the motor.

Canarm brings you our latest innovation - the ECsmart motor featuring patent pending electronics. The result is an **ENERGY EFFICIENT** motor that runs **COOLER** than any other in the industry.



### FEATURES

- The First EC motor that can be varied with existing 0-10v signal.
- Provides feedback for ventilation management.
- Can be retrofitted in any existing fan.
- Can be controlled by existing controls.
- Testing has confirmed power savings of 25-75%.
- ECsmart motors run cooler, virtually eliminating winding failures and increasing lifespan on the motor.
- Tested at BESS labs in our PLF and FG series fans.



PLF & FG models now available with EC motors.  
See back page for details.

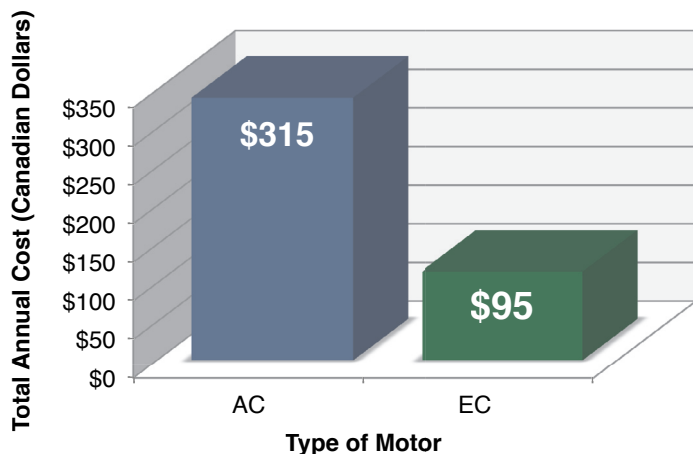
### WARRANTY

Comes with a **FULL 5 YEAR** warranty.

### EC VS. REGULAR MOTOR

#### Cost Savings (running at 60% speed)

Results show cost savings of a typical 24" fan using a regular motor vs a 24" fan using the ECsmart motor over a period of 365 days.



	FULL SPEED	60% SPEED
Typical AC Motor	536 W	324 W
ECsmart Motor	462 W	98 W
Input Cost of kWh	\$0.19	\$0.19
Input # hours per day	14 hrs/day	14 hrs/day
Total Annual Cost AC Motor	\$520.40	\$314.57
Total Annual Cost ECsmart Motor	\$448.56	\$95.15
Annual Savings by switching to ECsmart	\$71.84	\$219.42

Costs shown in Canadian dollars

