



**EVENGROW®**  
RADIANT AGRICULTURAL HEATER



**SUPERIOR**  
RADIANT PRODUCTS



**A FULL RANGE OF  
INFRARED HEATING EQUIPMENT  
FOR AGRICULTURAL APPLICATIONS**

SAVING ENERGY FOR FUTURE GENERATIONS  
**[WWW.SUPERIORRADIANT.COM](http://WWW.SUPERIORRADIANT.COM)**

# ABOUT US



**SUPERIOR**  
RADIANT PRODUCTS

**Superior Radiant Products** is an industry leader in the design and manufacture of energy efficient infrared heating solutions. Located in Canada, USA and China, SRP offers a complete range of infrared heating equipment worldwide.

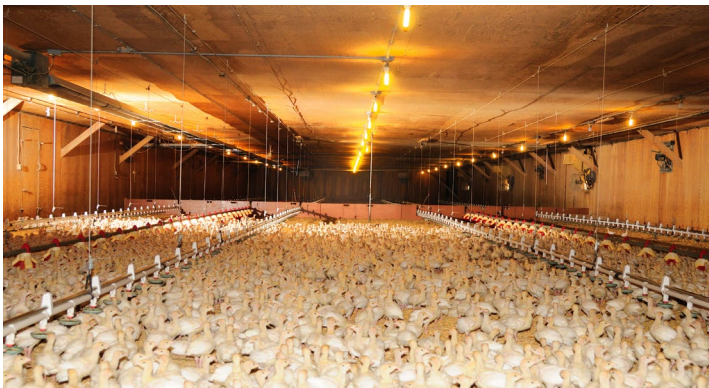
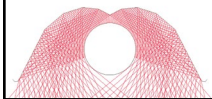
SRP staff members are infrared experts with 100+ years of combined experience. Holding several patents, SRP is dedicated to continuous R&D with an extensive engineering department to ensure superior technology. Our agricultural specialists ensure exceptional after sales service.

The **SRP EVENGROW®** line of infrared heaters offer the best premium features available in the industry for optimum production and maximum return on investment.

**Constructed to withstand the harsh environment of agricultural applications, each radiant tube heater includes:**

- Waterproof burner housing
- Sealed blower enclosed in burner box
- Aluminized tubing
- Potted ignition module

100% EFFICIENT  
REFLECTOR  
ON ALL MODELS



Corporate offices and factory located in Stoney Creek, ON Canada



SRP's operation in USA



## Successful applications include:

- Broiler houses
- Pullet houses
- Wean to finish hog houses
- Turkey starter and finishing houses
- Calving barns
- Horse arenas

"I am very pleased with the success we have experienced since installing Superior Radiant Products heaters in our turkey brooders. The heater fuel efficiency and layout design provide a heat performance that contributes significantly to the extra 20,000 units a year we produce."

**Ron DeVisser**, Berry Bush Farms

**SAVING ENERGY FOR FUTURE GENERATIONS**  
**WWW.SUPERIORRADIANT.COM**





# EVENGROW®

RADIANT AGRICULTURAL HEATER

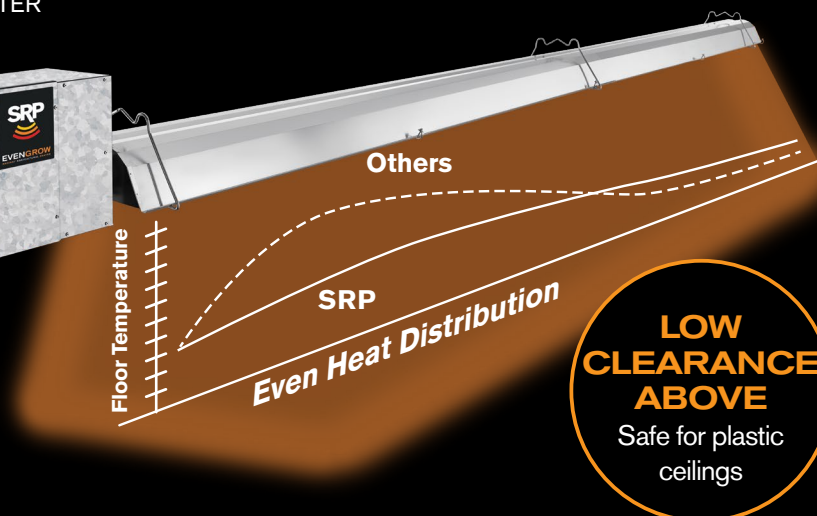
MODEL ALTX HIGH EFFICIENCY HEATER

## Patented SRP EVENGROW®

Model ALTX technology eliminates the "hot spot" without compromising efficiency.

Improved growth rates and increased water consumption.

**No hot spot** for maximum animal comfort and less crowding.

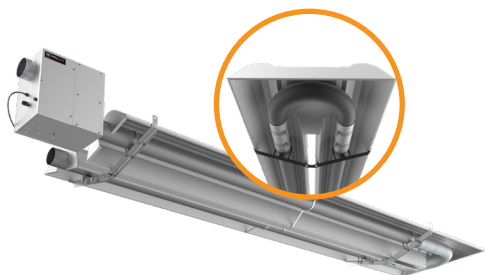


**LOW CLEARANCE ABOVE**  
Safe for plastic ceilings

## SRP BIG SHOT®

Provides maximum radiant coverage to the litter in poultry houses supporting bird performance especially in the first crucial days of placement.

- 16" tilted reflectors for improved heat distribution in wider houses
- Lowest convective heat loss with SRP's 100% efficient reflector
- Heat-treated aluminized steel tubing for Superior Radiant output



## AUX Single & ATX Two Stage

Premium high efficiency features for the agricultural industry with special anti-corrosion construction for harsh environments.

- Waterproof housing for best reliability
- Potted ignition modules
- Sealed maintenance-free blower motor



## SRP FLAPPER

HINGED VENT TERMINAL

The "Flapper" prevents cold air from entering the emitter tube when heater is not operating, and directs warm exhaust air towards the floor of the barn during operation.



## SRP BROODER

- High and low pressure supply models
- Factory pre-assembled components for quick installation
- DSI integral dual fuel regulator to easily convert between gas types
- Stainless steel easy to clean burner. No filter required



## SRP FORCED AIR HEATER

- Electronic two-stage
- NG or LP both solutions with only one gas valve
- Flexible interior and exterior installations options



In addition to our superior technology, our industry trained staff can offer assistance with:

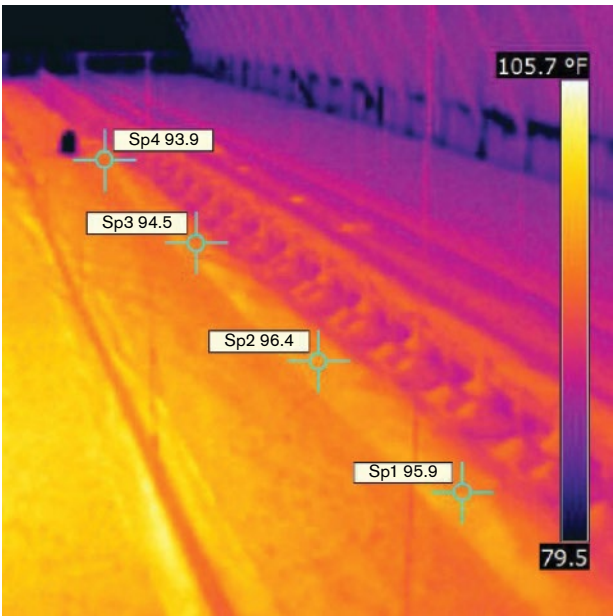
- Layout and design
- Service technician training
- Presentations to integrators and end users on the benefits of radiant heaters
- Installation team training
- Thermal images to document heat patterns and floor temperatures



"This is a new installation of Superior Radiant ALTX **No Hot Spot** heaters in a hog wean to finish farm. The ALTX uses patented technology to have even tube temperatures the entire length of the tube heater and is extremely efficient directing all the radiant heat down to the floor. It is ideal for wean to finish barns and nursery barns where the penning prevents the pigs from moving into a comfort zone."

**Northeast Agri Systems Inc.**

PROOF IS IN THE PHOTO



The thermal image documents the even floor temperatures obtained along the feeder line using the SRP EVENGROW® ALTX series heater in a poultry house application. You can also see the colour variance documenting the coldness of the outside wall in the background of the photo.

SRP EVENGROW® MODEL	BTU RANGE	LENGTHS
<b>ALTX</b> (No Hot Spot)	60,000 to 100,000	30-50 ft
<b>AUX</b> (Single Stage)	60,000 to 175,000	20-60 ft
<b>ATX</b> (Two Stage)	40,000 to 125,000	10-50 ft
<b>SRP BIG SHOT®</b> (Wider Houses)	60,000 – 80,000	20 ft
<b>SRP BROODER</b> (High & Low Pressure Supply)	40,000	Reflector 35"
<b>SRP FORCED AIR HEATER</b> (Two Stage)	250,000/160,000	30.75" L x 18.25" W x 28.25" H

THANK YOU

for choosing Superior Radiant Products for your Agricultural Heating needs. At Superior Radiant Products we offer a complete line of radiant heaters that allows each grower, distributor or integrator to get the most efficient heating equipment available within their budget. Whether it is a new house or a retrofit we will explain your options, features, benefits and fuel savings that each model provides.

Visit our website for I/O manual



**SUPERIOR**  
RADIANT PRODUCTS



Superior Radiant Products Ltd.  
563 Barton Street  
Stoney Creek, ON L8E 5S1 Canada

Superior Radiant Products Inc.  
315 N Madison Street  
Fortville, IN 46040 USA

1 800 527 HEAT(4328) | tel 1 905 664 8274 | fax 1 905 664 8846  
sales@superiorradiant.com | www.superiorradiant.com

**SAVING ENERGY FOR FUTURE GENERATIONS**

DISTRIBUTOR