

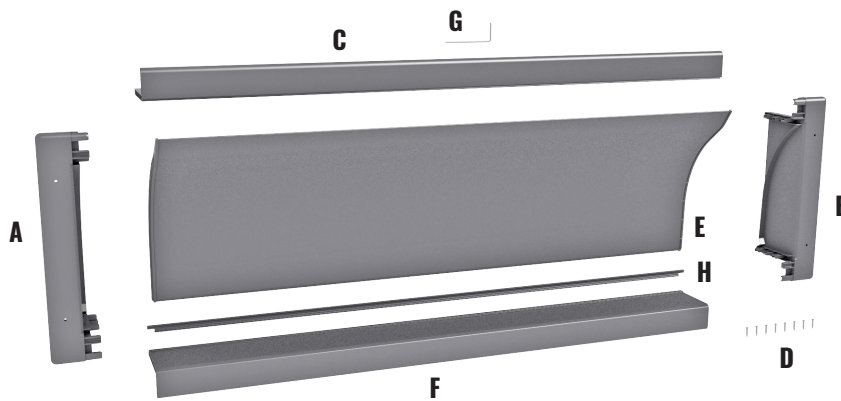


DOUBLE L GROUP LLC

# DIRECTAIRE RECESSED ACTUATED WALL AIR INLET

## Installation Installation

To view full installation video, visit <http://www.doublel.com/directaire-wall-inlets.html>



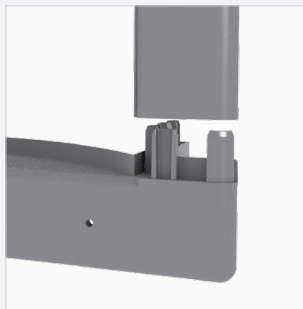
### PARTS LIST

- A Left Endcap
- B Right Endcap
- C Long Frame Section  
w/ Section w/ Brush Seal
- D Plastic Nails (8)
- E Louver
- F Long Frame w/ Hinge Profile
- G Shut-off
- H Plastic Hinge

## INLET ASSEMBLY INSTRUCTIONS



**Step 1.** Install frame profile with brush seal onto side endcap.



**Step 2.** Install long frame section with hinge profile onto side endcap.



**Step 3.** Slide plastic hinge onto inlet hinge profile.



**Step 4.** Slide curved louver blade onto plastic hinge.



**Step 5.** Install other side endcap.



**Step 6.** Using a rubber mallet, be sure endcaps are securely in place.

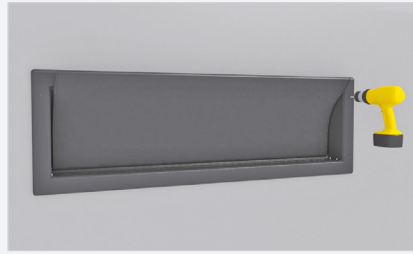


**Step 7.** Using a rubber mallet, install eight plastic nails in holes, securing inlet together.

# INLET INSTALLATION INTO WALL



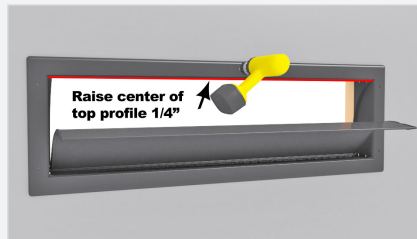
**Step 1.** Install inlet into the framed opening.



**Step 2.** With inlet in place, fasten endcaps securely using four 2-inch screws.



**Step 3.** Fasten 1 screw into center of bottom profile. Be sure it's straight across bottom.



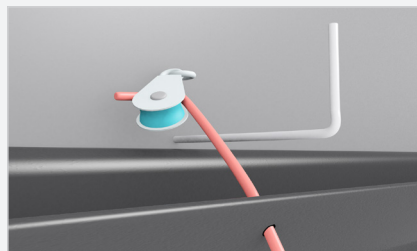
**Step 4.** Push slightly up in center of top profile (about 1/4"). Once in place, fasten to wall. Make sure louver opens and shuts easily without binding.



**Step 5.** Install shut-off. Screw in just above flange, close to center, avoiding pulling cable.



**Step 6.** Install winch block or pulley at the top of the inlet.

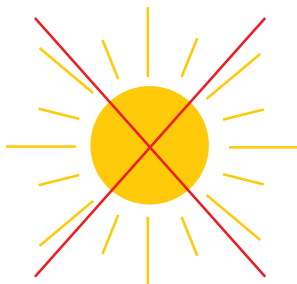


**Step 7.** Pull string through hole in louver, then through block or pulley towards direction of pull.



**Step 8.** Caulk all four sides of inlet after installation for improved inlet performance.

**NOTE:** After actuator is installed, readjust all inlets to make sure they shut properly.

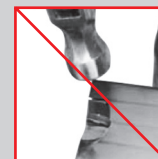


**DO NOT STORE BOXES OR INLETS IN DIRECT SUNLIGHT.**

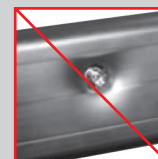
**IF DO NOT FOLLOW INSTRUCTIONS, WARRANTY WILL BE VOID.**

## WARNINGS

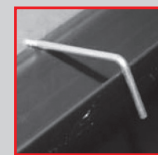
*Please read before installing*



**USE OF A METAL HAMMER CAN RESULT IN DAMAGE TO INLET HOUSING**



**DO NOT OVERTIGHTEN SCREWS! TIGHTEN UNTIL FLUSH, DO NOT DENT THE HOUSING!**



**DIRECTAIRE SHUT-OFF INSTALLATION (PLACED AT TOP & CENTER OF INLET)**



**A WIND DEFLECTOR MUST BE INSTALLED TO PROTECT FROM DIRECT SUNLIGHT**



**Have technical questions?**  
Contact Dick Streicher at  
1-563-875-6257 or 1-800-553-4102

**(563) 875-6257 or 1-800-553-4102**  
**[www.doublel.com](http://www.doublel.com)**  
**[www.youtube.com/doublelgroup](http://www.youtube.com/doublelgroup)**