

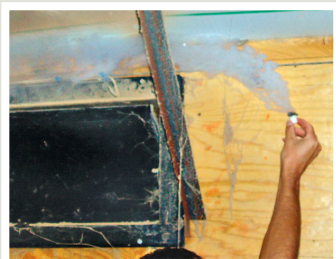
DirectAire 4408 / 4108 European Curved Inlet



Directs fresh air along the ceiling



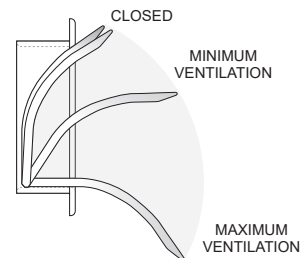
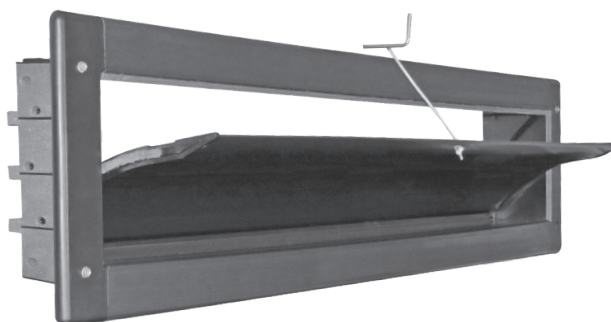
Ideal above the cool cell



Recessed design effectively pulls warm air from sidewalls 3 feet away and mixes warm air with fresh incoming air



DirectAire Inlets direct air along ceiling towards center of poultry house



Insulated, aerodynamic curved blade directs fresh air along ceiling to center of wide megahouses

DirectAire 4408

Part No. 90553CH

CFM: Approx. 1,669 @ 0.1 SP

Rough Opening: 44.5" x 8"

Ship Weight: Approx. 9 lbs

DirectAire 4108

Part No. 90557CH

CFM: Approx. 1,555 @ 0.1 SP

Rough Opening: 41.5" x 8"

Ship Weight: Approx. 8 lbs

- Aerodynamic, curved louver blade directs fresh air along ceiling to ceiling peak for effective air mixing and speeds air to the center of even wider poultry megahouses.
- Totally sealed PVC construction prevents darkling beetles from deteriorating the inlet.
- Ideal for above the cool cell.
- Great for reducing or eliminating bird drafting and saving on heating costs; improve bird performance.
- Fully sealed against air leakage and light; rodent and corrosion resistant.
- During operation, airflow is directed through the inlet's opening rather than leaking out the bottom and sides of inlet.
- Wind deflector needs to be installed to protect inlet from direct sunlight. Warranty is void if wind deflector is not used on DirectAire Inlets.

