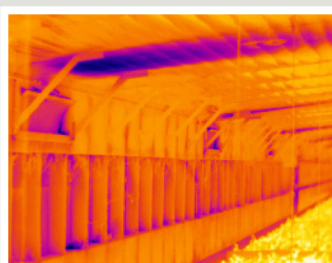


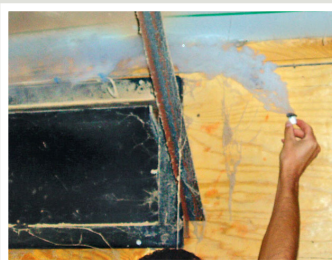
DirectAire 4413 / 4113 European Curved Inlet



**Directs fresh air
along the ceiling**



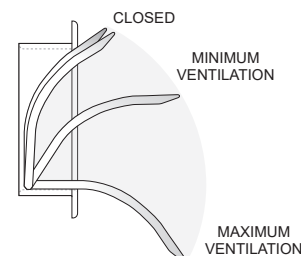
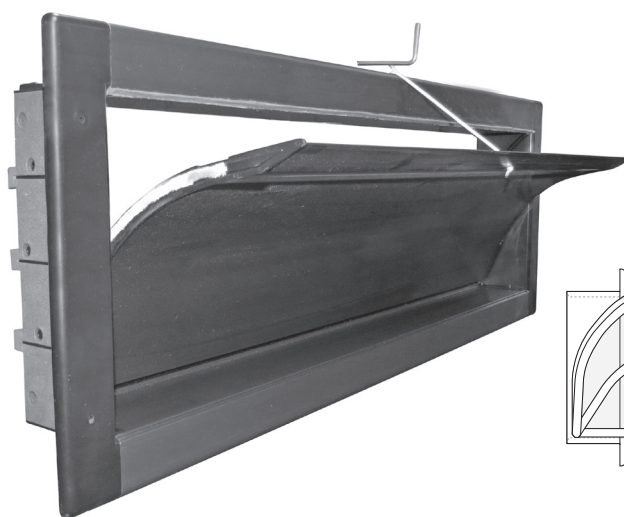
**Maintains 50% greater air
velocity 20 feet from the
inlet than conventional inlets**



**Recessed design
effectively pulls warm air
from sidewalls 3 feet away
and mixes warm air with
fresh incoming air**



**DirectAire Inlets direct
air along ceiling towards
center of poultry house**



***Insulated, aerodynamic curved blade directs fresh
air along ceiling to center of wide megahouses***

DirectAire 4413

Part No. 90554CH

CFM: Approx. 3,474 @ 0.1 SP

Rough Opening: 44.5" x 13.5"

Ship Weight: Approx. 12 lbs

DirectAire 4113

Part No. 90556CH

CFM: Approx. 3,236 @ 0.1 SP

Rough Opening: 41.5" x 13.5"

Ship Weight: Approx. 11 lbs

- Aerodynamic, curved louver blade directs fresh air along ceiling to ceiling peak for effective air mixing and speeds air to the center of even wider poultry megahouses.
- Totally sealed PVC construction prevents darkling beetles from deteriorating the inlet.
- Delivers 70% more air (cfm) than conventional 7" x 46" metal inlets and reduces number of inlets needed.
- Great for reducing or eliminating bird drafting and saving on heating costs; improve bird performance.
- Fully sealed against air leakage and light; rodent and corrosion resistant.
- During operation, airflow is directed through the inlet's opening rather than leaking out the bottom and sides of inlet.
- Wind deflector needs to be installed to protect inlet from direct sunlight. Warranty is void if wind deflector is not used on DirectAire Inlets.



DOUBLE L GROUP LLC • info@doublel.com • www.doublel.com • (563) 875-6257