

Socorex Syringes

Routine Maintenance

NOTE: For large operations it is advisable to instruct and authorize one or two people only on how to disassemble, clean and/or repair syringes. This will prevent potential problems and equipment failures.

☐ **CLEANING**

It is recommended that your syringe be thoroughly cleaned when you are through using it for the day.

1. Disassemble syringe, wash in warm soapy water and rinse. If working with the valves, it is a good idea to work over a small bowl in case the small springs or balls are dropped.
2. If heavily stained or there is residue in syringe assembly or plunger sticks or is "frozen", we recommend soaking all parts in a solution of warm water and CLR* for a half hour, or until parts break apart freely. Then wash in warm soapy water and rinse.
3. When cleaning intake and outlet valves, run a pipe cleaner through the valve to remove any particles that may have become lodged inside.
4. Either air dry or hand dry thoroughly before reassembling.

NOTE: Some producers, instead of completely breaking syringe down and cleaning as recommended above, will shoot water through the syringe if it is not particularly dirty. We do not recommend this procedure. However, if you do this use only distilled water as the minerals in tap water will calcify and eventually stick the valve ball.

☐ **VALVE ASSEMBLY**

Attention must be paid when disassembling and reassembling the intake and outlet valves. Each of these valves has a spring and a stainless steel ball inside. If these parts are reversed, the syringe will not draw or release as intended. When working with the valves, it is a good idea to work over a small bowl in case the small springs and balls are dropped.

• **Intake Valve**

The intake valve is the valve on the top of the syringe -- the one used with the vial holder.

1. Holding the intake valve upside down, drop the stainless steel ball into the opening; then gently insert spring into hole. (Spring will not go all the way into the valve, about half will be sticking out.)
2. Holding the syringe upside down, screw the intake valve (with spring sticking up) back into position onto the barrel casing. Securely hand-tighten or gently tighten with pliers.

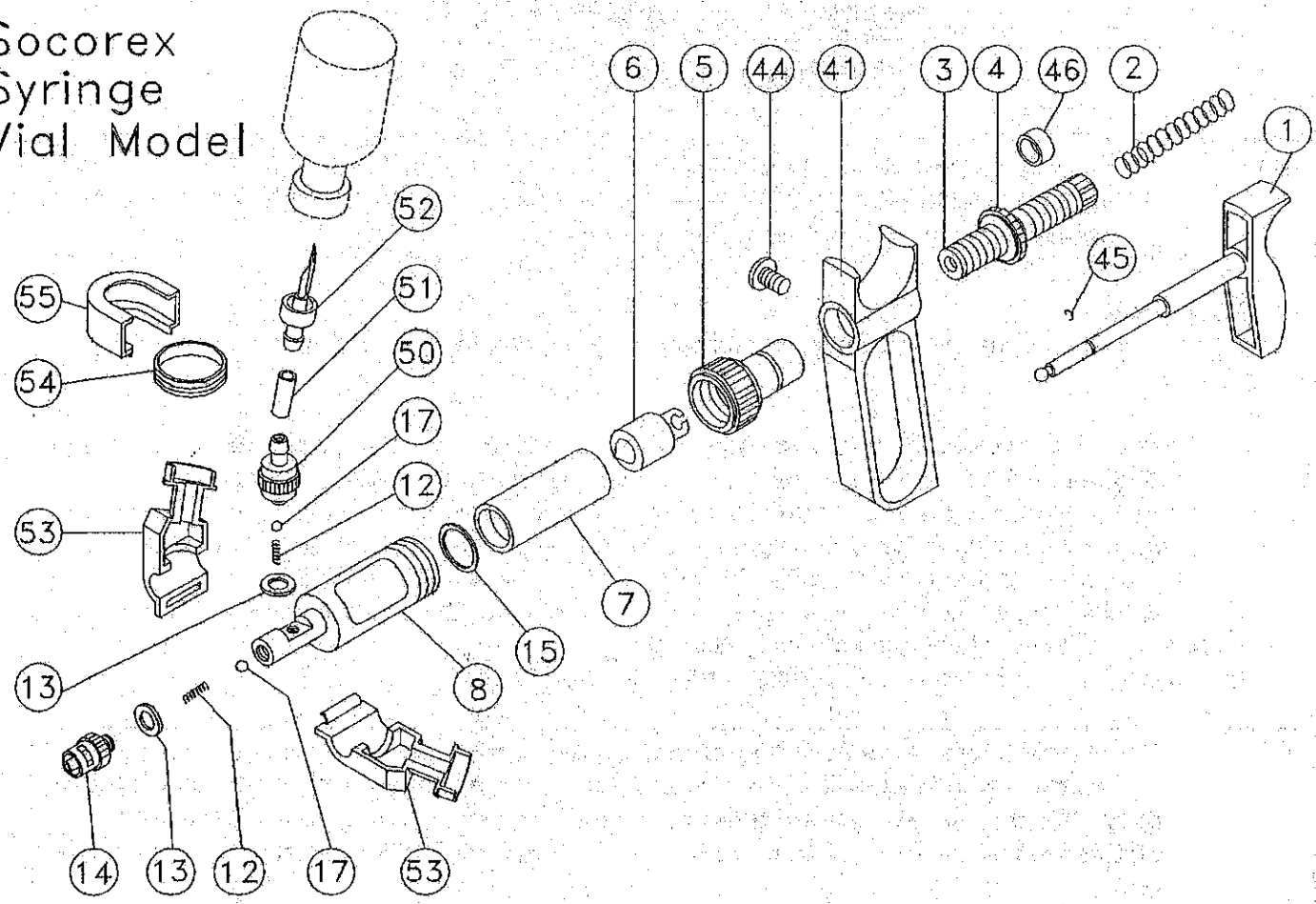
• **Outlet Valve**

The outlet valve is the valve on the end of the syringe to which the needle is attached.

1. Holding the syringe with the needle end up, drop the stainless steel ball into the barrel, and then insert the spring. A small portion of the spring will stick out past the end of the barrel.
2. Put the outlet valve over the end of the spring and proceed to screw it into the end of the barrel casing.

* CLR is a liquid cleaner/degreaser product available at many local discount, hardware, and farm stores.

Socorex Syringe Vial Model



Socorex Syringe Feed Tube Model

