



80,000 Btu/H Radiant Poultry Heater

More Heat, Where You Need It!



PATENT PENDING



It's NOT Just Another Tube Heater

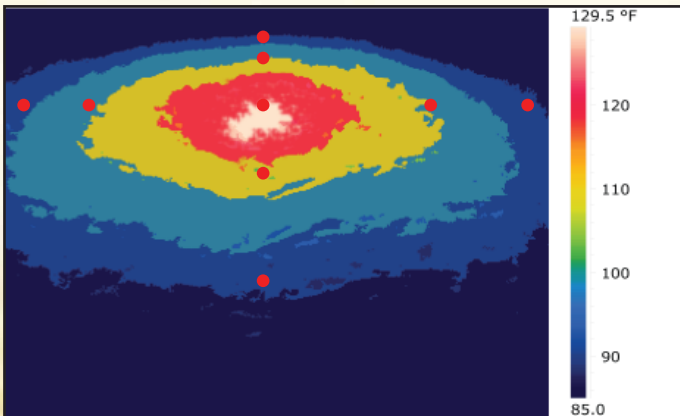


The smaller 3-inch tube quickly pushes the heat into the second tube, minimizing the hot spot directly under the unit.

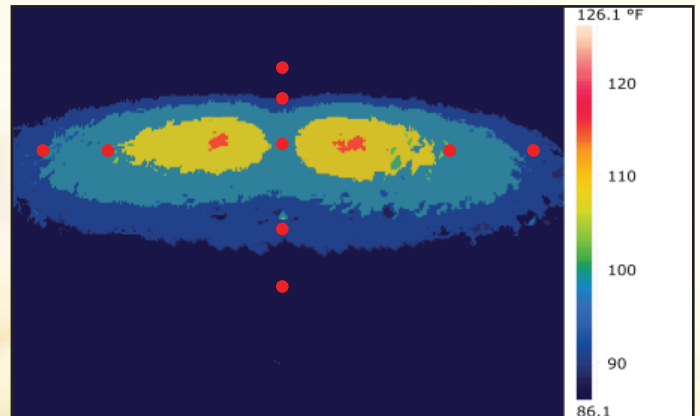
3 in. ROUND TUBE

A 3-inch round tube transitions to a 4-inch oval tube delivering a long, wide, oval heat pattern. No egg shape.

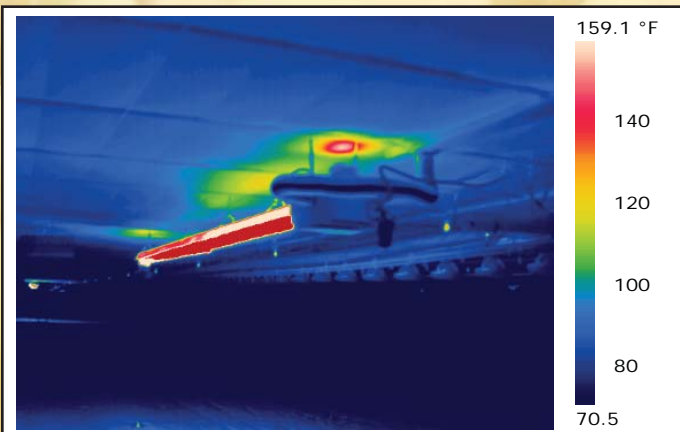
More Heat to the Floor / Cooler Ceiling Temperature



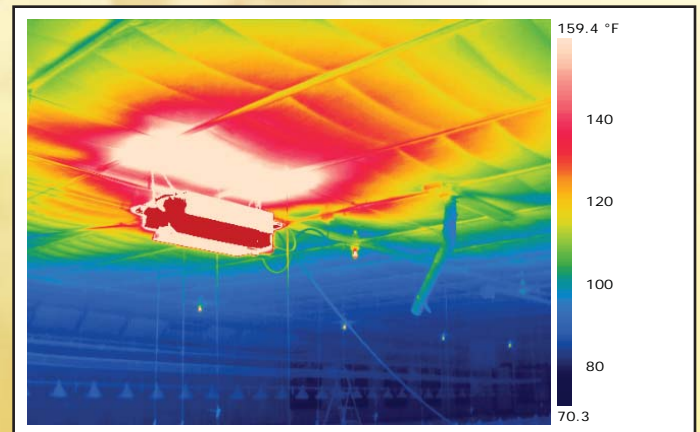
Oval 80 has longer, oval heat pattern.



Competitive Unit



Oval 80 ceiling temperature = 133°F, no need for insulation board above the heater.



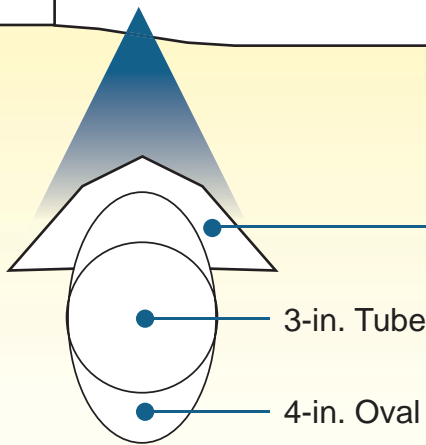
Competitive Ceiling Temperature (Max.) = 190.6 F

80,000 Btu/H Radiant Poultry Heater

We started with a clean sheet of paper and designed a radiant heater that delivers more heat to the floor than any other heater in the category.

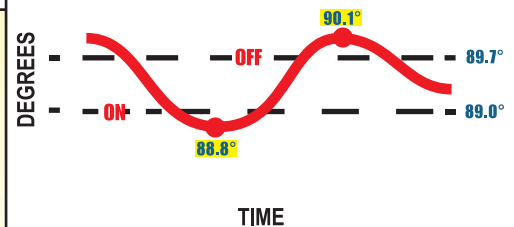
The 4-inch oval shaped tube maximizes the radiant heat transmission to the sides due to the increased surface area directed to the side.

4 in. OVAL



The unique reflector design, optimized for 80K Btu/h, maximizes the heat transfer to the sides, and minimizes the transfer of heat directly below.

SMALL TEMPERATURE VARIATION



The Oval 80 radiant heater achieves a tight temperature range, varying less than 1.5°F between cycles.

**Quicker pre-heat time
SAVES FUEL!**

Easy to Install and Maintain

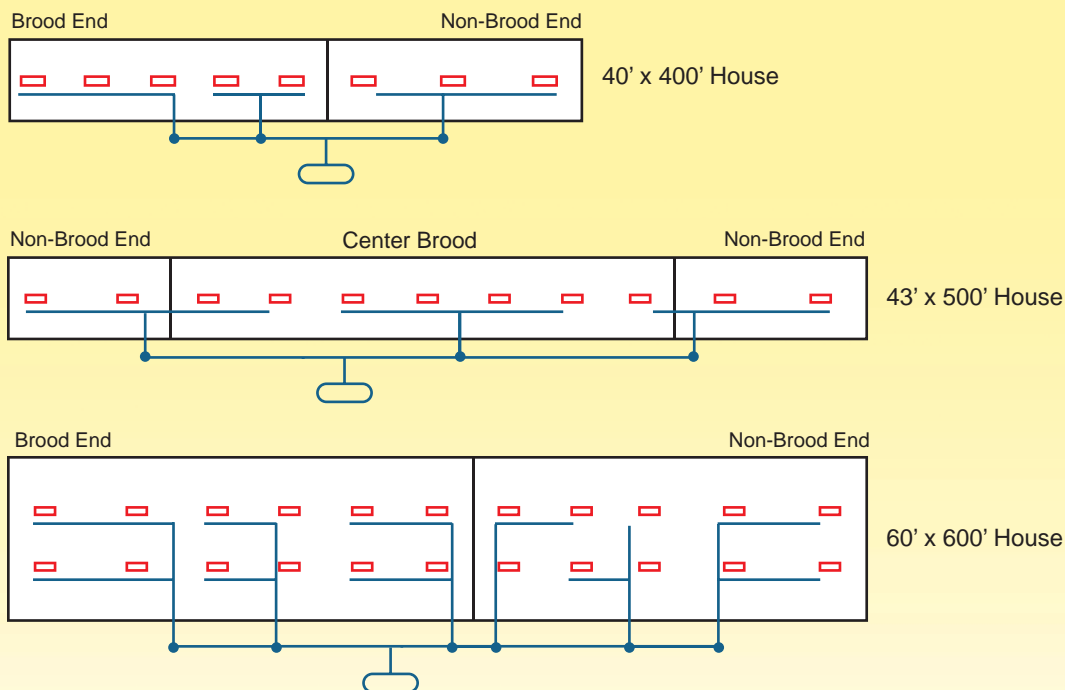


Oval 80 radiant heaters are 100% test fired at the factory and come with all of the components you need for easy installation. The Oval 80 uses fresh air for combustion, not dirty, caustic house air. Components stay clean and it's practically **MAINTENANCE FREE!**

- Utilizes fresh air
- Totally enclosed components
- Even burner performance regardless of fan or ventilation operation.
- Components are accessible and easy to replace.
- Diagnostic lights on bottom of unit are visible from entire house.

L.B.WHITE

Application - Example Heater Placement



Please contact your distributor or L.B. White for layout for your specific building.

Heater Specifications

Model Numbers:	OVAL 80™		OVAL 80™
Rating (Btu/h):		Heater Case Dimensions (in.):	
Single Stage	80,000	Height	9.5
Tube Length (ft.):	20	Width	18
Minimum Installation Height (ft.):	6	Length	30
Inlet Gas Supply Pressure:		Net Weight (lbs.):	81
Propane (<i>in. w.c.</i>)	11-13.5	Shipping Weight (lbs.):	350*
Natural Gas (<i>in. w.c.</i>)	7-13.5	Reflector Material:	Polished Alum.
Fuel Consumption (max.):		Tube Material:	
Liquid Propane Gas (<i>lbs./hr.</i>)	3.7	First 10 ft. section	Alum. Steel
Natural Gas (<i>cu. ft./hr.</i>)	80	Balance	Steel
Ventilation (CFM):	140	1/2" x 6' Gas Hose:	S
Spark Ignition:	Yes	Hanging Hardware:	S
Temperature Controls Available:		Regulator:	O
Individual Thermostat Control	Yes	Piping Hardware, including gas shutoff:	O
Wired to House Env. Control	Yes	Air Inlet Kit:	O
Electrical Requirements			
(Volts / Hz / Phase):	115 / 60 / 1		
Minimum Clearance to Combustibles (ft.):			
Top	1		
Side	6		
Below	6		

*Shipped in sets of 4
S = Standard O = Optional



W6636 L.B. White Road . Onalaska, WI 54650
800-345-7200 / 608-783-5691
www.lbwhite.com

F#150-00000