

# Permethrin™ II

Spray Insecticide



## Product Description

**Permethrin™ II** is an emulsifiable insecticide spray containing 10% permethrin. It is labeled for use directly on beef cattle, dairy cattle, swine, horses, poultry and dogs and their premises. It provides up to 30 day residual effect against various pests including flies, lice, mites, mosquitoes, fleas and ticks, including deer ticks (carriers of Lyme disease).

## Features & Benefits

- Controls a variety of pests on cattle including horn flies, face flies, stable flies, horse flies, mosquitoes, lice, mites and ticks (including deer ticks - carriers of Lyme disease).
- Kills a variety of pests on farm premises including house flies, stable flies, lesser house flies, mosquitoes, lice, mites and ticks (including deer ticks - carriers of Lyme disease).
- Aids in control of cockroaches, mosquitoes and spiders in and around farm premises.
- Effective against mange mites and hog lice on swine and mites on poultry.
- Convenient to apply as a high or low pressure spray, with a hand or garden sprayer or as a spot spray.
- Can be applied in a mist blower or power fogger with water or oil as a carrier.
- Use as a fog, as a spray or in back rubbers.
- One quart will treat 200 mature animals as a direct-to-animal spray or cover 18,750 sq. ft. of surface at maximum dosage.

## Product Information

### Name:

Permethrin™ II Insecticide

### Code:

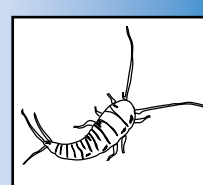
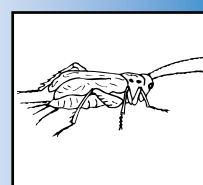
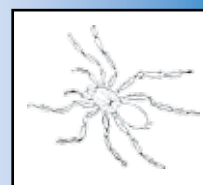
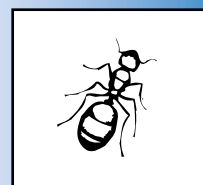
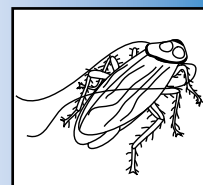
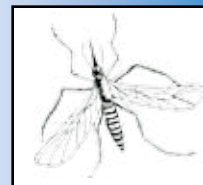
216311010  
216311011

### Size:

1 qt. (946 mL)  
8 fl. oz. (237 mL)

## Warning & Precautions

- Keep out of reach of children.
- Always read and follow label directions carefully.
- Do not contaminate feed, food or water.
- Do not use on dogs under 12 weeks of age.
- Consult a veterinarian before using on debilitated, aged, medicated, pregnant or nursing animals.
- Extremely toxic to fish.



## Application And Use Directions

Pests On Farm Premises (Barn, Dairies, Loafing Sheds, Milking Parlors, Feedlots, Stables, Paddocks, Poultry And Livestock Housing)		
Pests	Permethrin II Dilutions For Use	How To Apply
Houseflies, stableflies, lesser houseflies and other manure breeding flies, fleas, lice, mites, ticks, including deer ticks (carrier of Lyme disease). Aids in control of cockroaches, mosquitoes and spiders	Mix 1 qt. in 25 gal.; 8 oz. in 6.25 gal.; 1-1/3 oz. (40 cc) in 1 gal. of water.** Use undiluted in mist blower. In power fogger, use 1 qt. in 25 gal.; 1-1/3 oz. (40 cc) in 1 gal. of oil or water.**	Spray all surfaces to run-off with diluted emulsion using 1 gal. per 750 sq. ft. Mist or fog 4 oz. per 1000 sq. ft.
Pests On Large Animals (Dairy Or Beef Cattle And Horses)		
Pests	Permethrin II Dilutions For Use	How To Apply
Faceflies, hornflies, horseflies	Mix 1 qt. in 20 gal.; 8 oz. in 5 gal.; 1.6 oz. (48 cc) in 1 gal. oil* to charge back rubbers.	Animals self apply. Recharge back rubber or oiler as needed.
Faceflies, hornflies, horseflies, stableflies, mosquitoes, lice, mites, ticks, including deer ticks (carrier of Lyme disease)	For high pressure sprayers: Mix 1 qt. in 200 gal.; 8 oz. in 50 gal. of water.	Spray to thoroughly cover entire animal. Apply from ½ to 1 gal. of spray per head. For lice or mites, a second treatment is recommended 14-21 days later.
	For hand or garden sprayers and low pressure sprayers: Mix 8 oz. in 3 gal.; 2.5 oz. (5 tablespoons) in 1 gal. or 20 mL. (4 teaspoons) in 1 qt. water.	Spray each animal with up to 8 oz. of mixed spray. For lice and mites, a second treatment is recommended 14 - 21 days later.
Ear ticks, faceflies, hornflies	Mix 2 oz. (60 cc) in 1 gal. oil* or water for spot application.	Apply ½ oz. per ear or 2-4 oz. on face or 12-16 oz. along the backline.
Pests On Swine, Sheep, Poultry And Dogs Only (Do Not Ship Swine For Slaughter Within 5 Days Of Last Treatment.)		
Pests	Permethrin II Dilutions For Use	How To Apply
Mange mites	Mix 1 qt. in 100 gal.; 8 oz. in 25 gal.; 1 oz. (30 cc) in 3 gal. of water.	Spray or dip animals. Retreat after 14 days spraying walls and floor and replace bedding to kill late hatching, developing stages. Do not reapply product for 2 weeks.
Blowflies, mosquitoes, hog lice, fleas, ticks, including deer ticks (carriers of Lyme disease).	Mix 1 qt. in 100 gal.; 8 oz. in 25 gal.; 1 oz. (30 cc) in 3 gal. of water.	Spray, paint, or dip to apply 1 pint per dog, pig or sheep, especially around ears. Do not reapply product for 2 weeks.
Ear ticks, faceflies, hornflies	Mix 1 qt. in 50 gal.; 8 oz. in 12.5 gal.; 2 oz. (60 cc) in 3 gal. of water.	Spray ½ oz. per bird, or 1 gal. per 100 birds, directed toward vent area. Spray cages.

### Active Ingredient By Weight

Permethrin (CAS no. 52645-53-1)	10.0%
Other Ingredients*	90.0%
TOTAL	100.0%

\*Contains petroleum distillates. Contains 0.75 lb. permethrin per gallon.

(See label for full use and precautionary statements)

Ask how our other animal health products can control your pest problems.  
For details, contact us at 800-322-8177 or at [www.kmgchemicals.com](http://www.kmgchemicals.com).

KMG Chemicals, Inc. • Houston, TX - USA

