



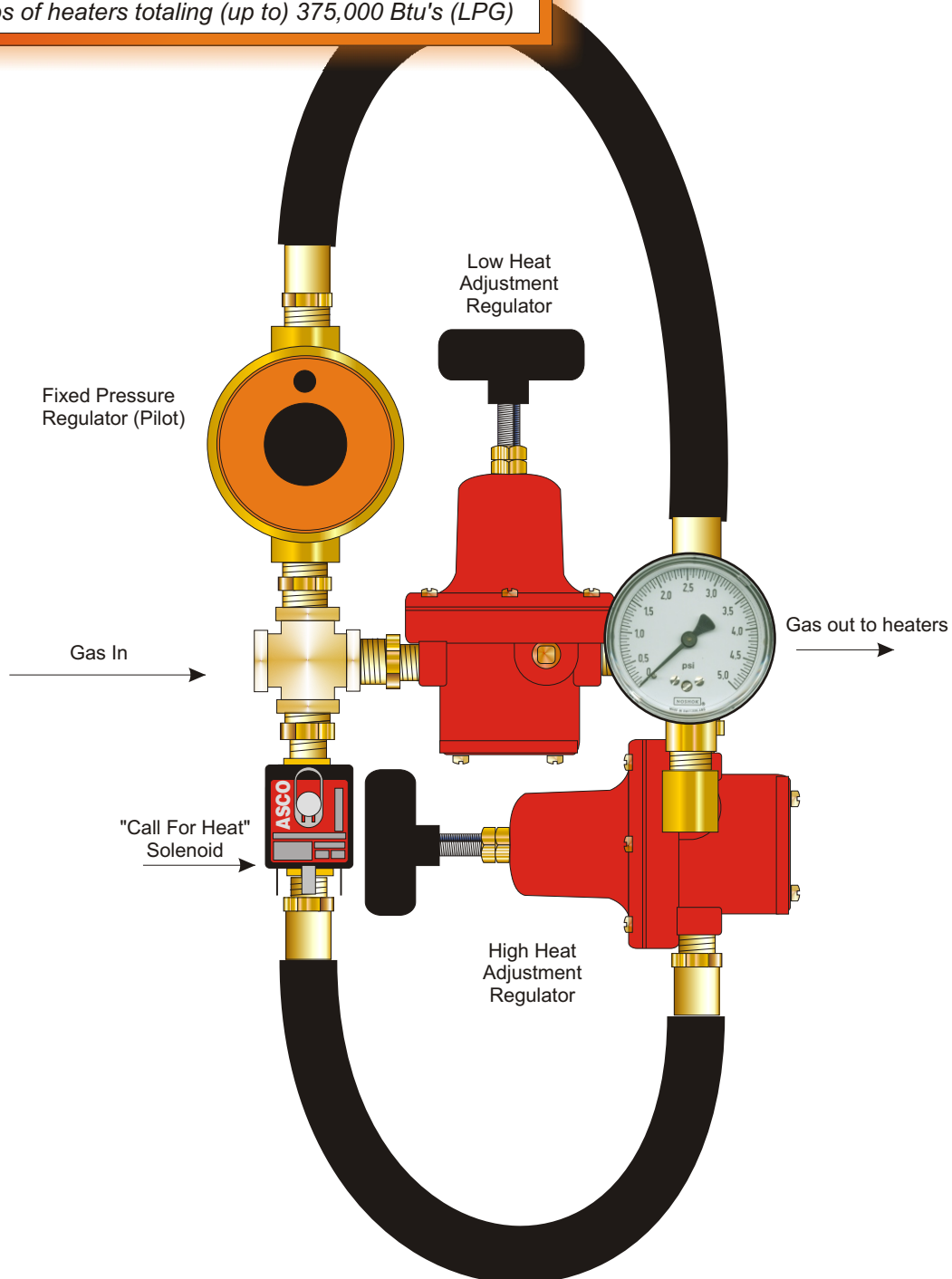
5818 S. 129th E. Ave Tulsa, OK 73134 Phone: 918-455-4588 Fax: 918-455-4396 www.gasolecusa.com

## HLB 20-300/F High/Low Gas Controller

GA Item # 804130

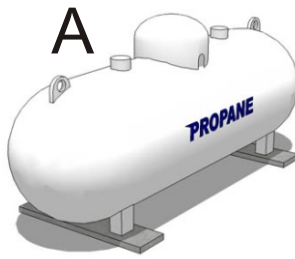
*Controls groups of heaters totaling (up to) 375,000 Btu's (LPG)*

Trust the best in  
**"Growheating"**



# 1. Source of gas

- A. LP tank
- B. LP Cylinders Battery
- C. Metered Natural Gas



or



or



## HLB 10-300/F High/Low Gas Controller

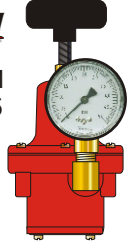
GA Item # 804130

Controls groups of heaters totaling (up to) 375,000 Btu's (LPG)



Gasolec PR 300M  
GA Item # 803205

1st Stage Regulator  
(at tank or battery)



# 3. "Second Stage Regulator" located at the building



Gasolec PR 300M  
GA Item # 803205

2nd Stage Regulator  
(at Building)



# 4. Select the thermostat



Your central controller

or

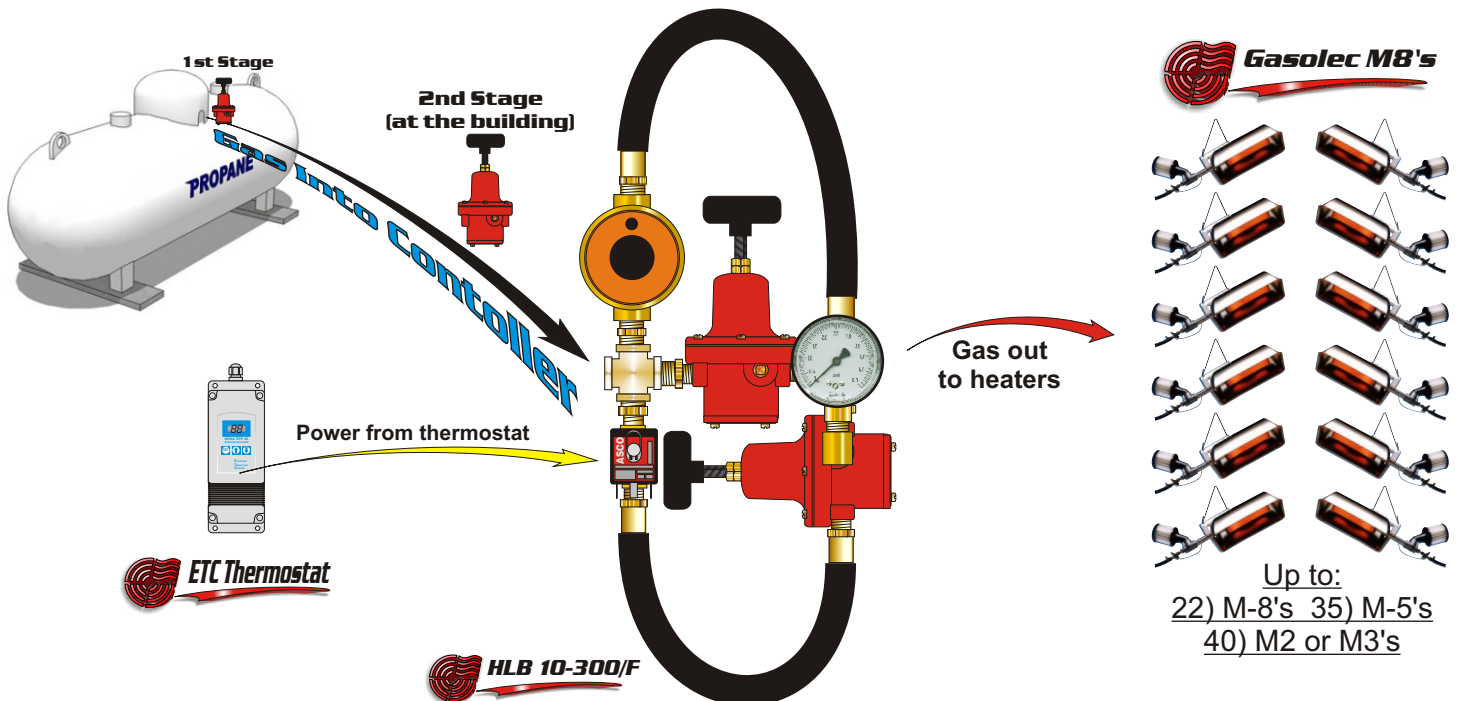


Gasolec ETC Digital Thermostat  
GA Item # 802105

or



Gasolec MT-16 Thermostat  
GA Item # 802100



The HLB10-300F GAS CONTROLLER is designed to provide the most economical and efficient use of gas, while maintaining optimum bird comfort. It allows your Gasolec brooders to operate fully within their designed ranges, from a pilot or maintenance heat of 20 mbar (0.3 psi) to their maximum of 300 mbar (4.5 psi).

## SET-UP AND OPERATION OF THE HLB 20-300F GAS CONTROLLER

1. Inlet Line Pressure
  - A. Provide inlet side of the HLB 20-300F gas controller with 7-10 psi of gas pressure.
2. Preset High Heat Regulator (note: regulators are not preset from factory)
  - A. Open solenoid valve by giving a call for heat. (turn thermostat to maximum setting)
  - B. Adjust the high heat regulator, (see drawing) by turning brass thumb screws until pressure gauge reads 4.5 psi (300 mbar)
3. Light Heaters
  - A. Set thermostat to maximum. (if you have multiple zones, set all thermostats to max.)
  - B. Purge air from gas lines.
  - C. Begin lighting heaters from point furthest from controller.
    1. Hold safety device button down.
    2. Hold heater at angle to view infrared round burner.
    3. Place flame to hole in round burner until heater lights and continue holding safety device button until thermocouple heats.
    4. Continue lighting heaters until all heaters are lit. (if you have multiple zones, light all heaters in all zones.)
4. Final Regulator Setting

Note: It is important to have all heaters lit, as it will assure a full 4.5 psi to all heaters during final regulator setting.

  - A. With solenoid valve open and all heaters lit, check to see if pressure gauge reads 4.5 psi (300 mbar)
  - B. If you do not have 4.5 psi, readjust handwheel, then gently lock with lock nut. If you still do not reach 4.5 psi, you will need to increase your pressure. Ideally your incoming pressure should not have to exceed 7-10 psi. If you are having trouble reaching a full 4.5 psi at the controller's pressure gauge, contact your gas supplier or your Gasolec distributor for additional information.
  - C. Setting Low Heat Pressure

The fixed pressure regulator maintains the pilot flame. The low heat adjustment regulator is used for maintenance heat or manual control in the case of a power failure.

Your HLB 20-300F High Low GAS CONTROLLER is now ready to provide years of fuel efficient and dependable operation.

It is individual preference as to the high and low settings of regulation. The high heat and low heat settings we have suggested are based on the minimum and maximum gas pressures for your system's design. This allows the most efficient use of your fuel. Your HLB 20-300F gas controller gives you a high degree of flexibility to bracket the low and high heat settings. You may want to slightly increase low heat and/or decrease high heat, depending on the time of year and your particular preference. Also, it is strongly suggested that you preheat the liter 24 to 48 hours before birds arrive.

## CONTROLLING TEMPERATURE DURING AN ELECTRICAL POWER FAILURE

The low heat regulator can be increased manually during an electrical power failure and continue to provide heat for your birds. Monitor the birds and adjust the heat as needed until electrical power is restored. There is no need to adjust the high heat regulator during this time. Once electrical power is restored, reset the low heat regulator as described in section 4-C

Thank you for choosing Gasolec Infrared Heating Systems. We appreciate you and your business.

